



Welcome to... Arden Croft

[Find out more](#)

Make a referral:

 0330 324 0090

 referrals@dignus.group

 dignus.group

About this home

Arden Croft is a welcoming residential home designed with care and comfort in mind. It offers private living spaces alongside shared, safe communal areas. The setting is thoughtfully arranged to balance independence and support, giving people supported both privacy and social connection.

Support services

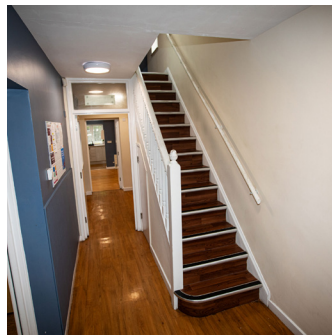
The support team at [Arden Croft](#) brings extensive experience in supporting individuals with a range of conditions, including:

- Autism
- Mental Health
- Challenging Behaviour
- Sensory Impairment
- Dementia
- Forensic Services
- Learning Disability
- Physical Disability
- Attachment and Detachment Disorders
- Down Syndrome
- PDA - Pathological Demand Avoidance Syndrome
- Brain Injury

What we offer

Arden Croft provides 24/7 residential support in a safe, nurturing environment. Each person supported receives a personalised care plan, access to modern amenities, and tailored support that respects their goals, preferences, and pace of growth.

Gallery



Lifestyle

Life at Arden Croft means choice, connection, and comfort. People supported can enjoy their own rooms, relax in shared spaces, take part in on-site or community activities, and personalise their routines. The environment fosters dignity, belonging, and meaningful daily experiences.

Who are we?

Dignus Group provides specialist support for people with complex needs, autism spectrum conditions, learning disabilities, and mental health conditions. We create safe, inclusive environments where individuals are valued, supported, and empowered to live fulfilling lives.

The local area


Situated in a convenient and accessible location, Arden Croft benefits from nearby shops, public transport, parks, and community facilities. People supported have access to local amenities and options to engage with the surrounding neighbourhood at their own pace.




View the CQC rating here

[View CQC rating](#)

Make a referral or discuss this home in more detail:

 0330 324 0090

 referrals@dignus.group

 dignus.group