



Welcome to... Highcroft House

[Find out more](#)

Make a referral:

- 📞 0330 324 0090
- ✉ referrals@dignus.group
- 📍 dignus.group

About this home

Highcroft House is a purpose-built residential home in the leafy suburb of Sutton Coldfield. It accommodates up to six individuals in independent apartment-style accommodation. Each apartment includes a lounge, dining room, kitchen, bedroom, and individual wet room. Communal spaces feature a spacious lounge, orangery, and a mature garden. The home is within walking distance of Sutton Park, local amenities, and transport connections.

Support services

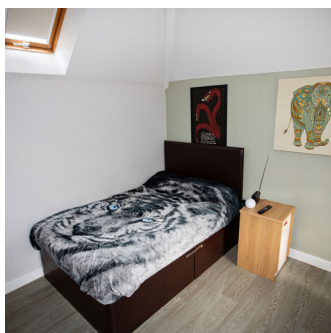
The support team at [Highcroft House](#) brings extensive experience in supporting individuals with a range of conditions, including:

- Autism
- Mental Health
- Challenging Behaviour
- Sensory Impairment
- Dementia
- Forensic Services
- Learning Disability
- Physical Disability
- Attachment and Detachment Disorders
- Down Syndrome
- PDA - Pathological Demand Avoidance Syndrome
- Brain Injury

What we offer

Highcroft House offers a homely environment with private and shared spaces designed to promote comfort and independence. Each apartment is equipped with modern amenities, and the communal areas provide opportunities for social interaction and shared activities. The secure garden and orangery offer tranquil spaces for relaxation and social engagement.

Gallery



Lifestyle

Life at Highcroft House is centred around autonomy, comfort, and community. People supported enjoy their own personal space within the apartments, while also having access to shared areas that encourage connection and relaxation. The secure garden and orangery provide opportunities for outdoor activities, and the home's location offers easy access to local amenities and transport links.

Who are we?

Dignus Group provides specialist support for people with complex needs, autism spectrum conditions, learning disabilities, and mental health conditions. We create safe, inclusive environments where individuals are valued, supported, and empowered to live fulfilling lives.




View the CQC rating here

[View CQC rating](#)


The local area

Highcroft House is situated in the Four Oaks area of the West Midlands. It is within walking distance of local express supermarkets and a family pub. The location has excellent transport links, with a bus stop just at the end of the road and Butlers Lane train station just a 15-minute walk.

Make a referral or discuss this home in more detail:

 0330 324 0090

 referrals@dignus.group

 dignus.group